

1. Port of Avatiu

Port Website	www.ports.co.ck
Port Address	PO Box 84, Avarua, Rarotonga, Cook Islands
Port Contact Telephone Number	+682 21921
Port Email Address	ports.authority@cookislands.gov.ck or info@ports.gov.ck
Restrictions on washing ship's hull	Harbour Master approval
Restrictions Painting	Harbour Master approval
Restrictions on Funnel Emissions	Harbour Master approval
Restrictions on Incinerator use	Yes
Approach	
Arrival Departure Restrictions	Daytime Arrival & Departure only (Daytime Port only)
Tidal Variation	0.80m
Prevailing Currents	E to W
Prevailing Winds	Easterly
Length of Channel	2.5nm
Width of Channel	300 metres – Entrance to Harbour is 50 meters wide
Depth of Channel	8m
Minimum Depth of Channel During Transit	12m
Air Draft Restrictions	27m (26.5 – central Berth (inline of the plane path))
Other Restrictions	Turning diameter 120m
Comments	Vessel of more than 120 meters and up to 200 meters can enter either bow into berth and reverse out or reverse into berth and bow out
Depth and breadth of turning basin	
Location of turning basin	In Harbour
Diameter	135 Max (allowable turning is 120m)
Depth	8m (Allowed Max draft – 7m)
Comments	The largest vessel that turns in the Harbour basin of Avatiu Harbour is MV IMUA II and MV LILOA II with total LOA 118 meters
Tug Boat	
Number of Tug	1 – Tug TOA
Bollard Pull	4T
Horse Power	225
Working Channel	16 For Initial calling & 12 for working
Pilot:	Available
Crew	1+1
Linesman	
Working Hours	Normal hours 8:00 am – 4:00 pm Monday to Friday also on Call 24hours
Do Linesman have boats	Yes
Name of Lines Boat	Orongo
VHF Channel	16/12
Port Officials	
Normal Working Hours	8:00 am – 4:00 pm Monday to Friday
Overtime Working Hours	4:00 pm - 8:00 am weekdays and weekends

Berth Information

Berth Name/Reference	International Berth or International terminal
Berth Photographs	Attached
Berth Length	260 meters
Dolphins	No
Height of Berth above MLW or Chart Datum	2.50m
Depth of Berth at HW	8.9m
Depth of Berth at LW	8.1m
Pier Width	30m concrete hardstand
Tidal variation	0.8m
Maximum LOA of Ship	120m vessel turning inside basin
Bollard Arrangements and Specification	10 meters apart
Mooring Fender Type and Arrangements	Trelleborg Super Cone Fenders
Security Fences and ISPS Compliance	Yes
Berth/Pier Obstructions	No

Anchorage

Anchorage Position	Navigation Chart NZ 9558 for anchorage point
Anchorage GPS Position	S21°11'.970" W159°46'.340"
Minimum Depth at Anchorage	36m
Type of Sea Bed at Anchorage	Coral
Prevailing Wind and Current at Anchorage	Wind – Easterly Current - E to W, Approximately ½ - 1 Knots
Can Ships Tenders be used	Yes

Jetty for Cruise Ship (When using Anchorage)

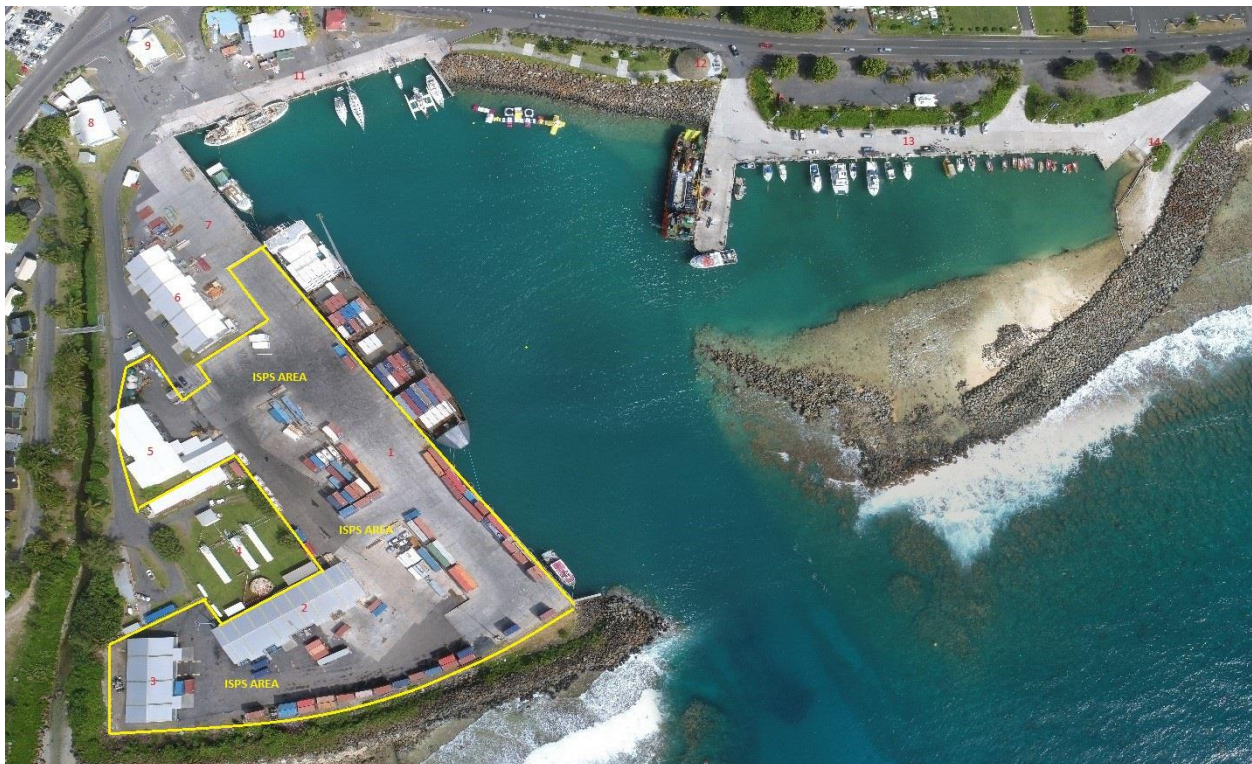
Jetty Name/Reference	Avatiu – Western Marina Jetty
Jetty Location	Western side of the Avatiu Harbour basin
Distance from Anchorage	1 km
Jetty Photographs	Attached jetty photographs
Number of Tenders able to Berth	2
Jetty Length	30m
Jetty Height above MLW or Chart Datum	1.9m
Jetty Height at HW	1.0m
Jetty Height at LW	1.8m
Depth at Jetty HW	3.8m
Depth at Jetty LW	3.0m
Types of Bitts and Fenders and Jetty	Small bollards and large tyre fenders
Time of Journey from Anchorage to Jetty	10-15 minutes

Distance from Jetty to Town Centre	15 minutes walking to town Centre
Is Jetty Wheelchair Accessible	Yes

Jetty for Cruise Ship Tenders (When using Anchorage Western Coast, Rarotonga)

Jetty Name/Reference	Arorangi Jetty
Jetty Location	Arorangi – On Western coast of Rarotonga – used when rough weather on Northern Coastline
Distance from Anchorage	1 km
Jetty Photographs	Attached jetty photographs
Number of Tenders able to Berth	2
Jetty Length	20m
Jetty Height above MLW or Chart Datum	1.9m
Jetty Height at HW	1.0m
Jetty Height at LW	1.8m
Depth at Jetty HW	3.8m
Depth at Jetty LW	3.0m
Types of Bitts and Fenders and Jetty	Small bollards and tyre fenders
Time of Journey from Anchorage to Jetty	10-15 minutes
Distance from Jetty to Town Centre	10km
Is Jetty Wheelchair Accessible	Yes

Port of Avatiu – Aerial View



Arorangi Jetty – NZ9558

